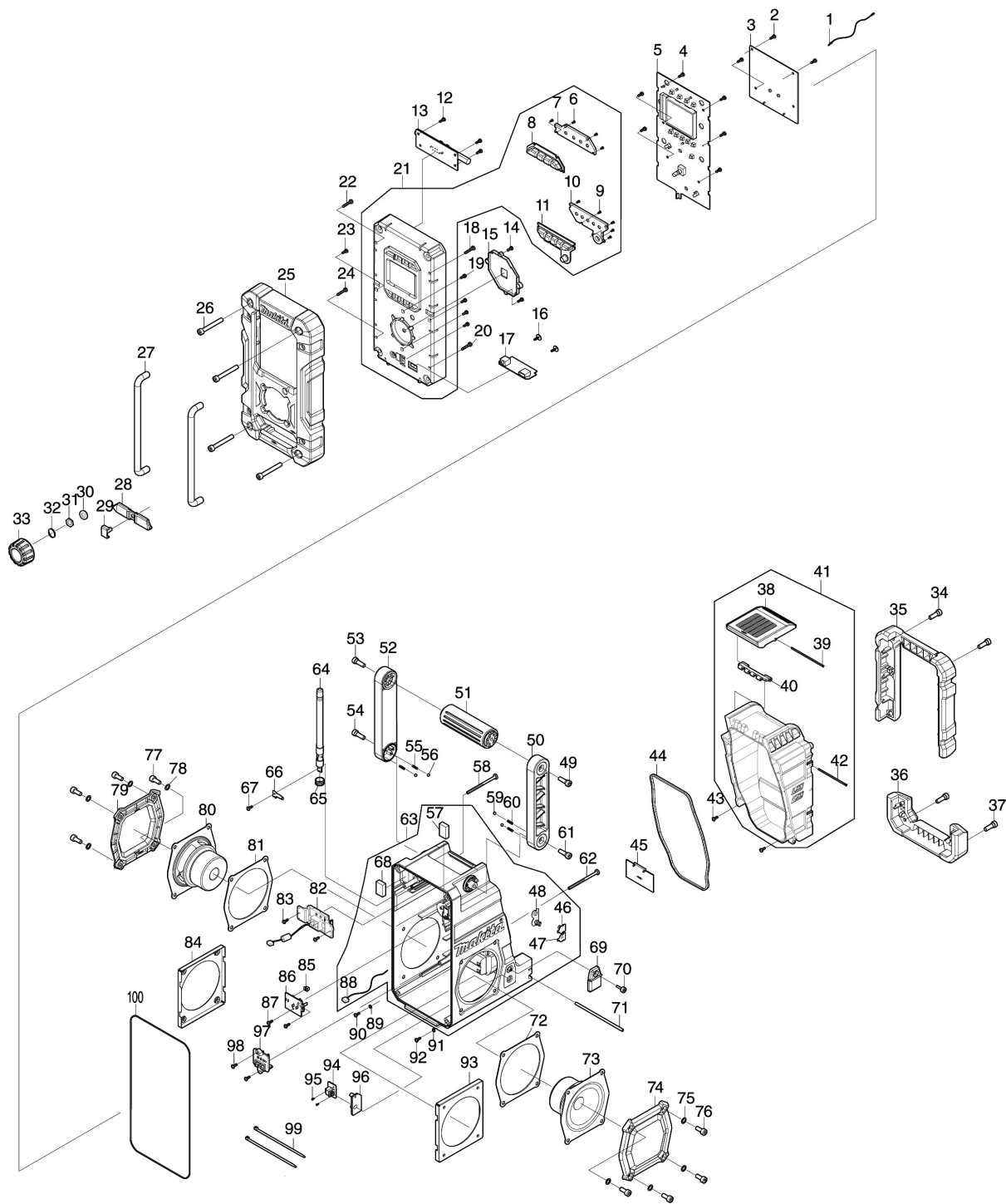


Model No.DMR108N JOB SITE RADIO



## Model No.DMR108N JOB SITE RADIO

Position	Référence pièce	Description	Echange	QTE	New/Old	Option 1	Option 2	COMMENTAIRE
001	SE00000437	CNT/W-A 200(SPK+1P) BLK		1			P1	
002	SE00000325	VIS PTB 3X8(NI)		3			P1	
003	SE00001058	PCB A ASS'Y		1				
004	SE00000325	VIS PTB 3X8(NI)		6			P1	
005	SE00001061	PCB C ASS'Y		1				
006	SE09090011	VIS 1.7		4		0	P1	
007	SE00000333	BOUTON INTERRUP. ALIM		1			P2	
008	SE00000334	BOUTON INTERRUP		1			P90	
009	SE09090011	VIS 1.7		5		0	P1	
010	SE00000336	PRESET BUTTON HOLDER		1			P1	
011	SE00000337	PRESET BUTTON		1			P67	
012	SE00000325	VIS PTB 3X8(NI)		3			P1	
013	SE00000339	PCB P ANT BAR ASS'Y		1			P12	
014	SE00000325	VIS PTB 3X8(NI)		2			P1	
015	SE00000656	KNOB LENS HOLDER		1				
016	SE00000193	VIS 3X10		2		0	P1	
017	SE00000343	PCB P USB ASS'Y		1			P69	
018	SE09064161	VIS M4X16		1		0	P1	
019	SE00000325	VIS PTB 3X8(NI)		4			P1	
020	SE09064161	VIS M4X16		1		0	P1	
021	SE00001063	FRONT CABINET ASS'Y		1				
D10		INC. 6-11						
022	SE09064161	VIS M4X16		1		0	P1	
023	SE00000325	VIS PTB 3X8(NI)		1			P1	
024	SE09064161	VIS M4X16		1		0	P1	
025	SE00000351	PROTECTION FACADE		1			P66	
026	SE00000160	VIS PTHE6X47		4		0	P1	
027	SE0338PC5Z	POIGNEE FACADE		2		9	P12	
028	SE00000355	BOUCHON PRISE JACK		1			P67	
029	SE00000356	PROTECTION JACK		1			P1	
030	SE00000754	EN/SW WASHER		1				
031	SE00000755	EN/SW NUT		1				
032	SE21B1110A	ANNEAU		1		0	P1	
033	SE00000482	ROTARY KNOB (BLK)		1				
034	SE09176166	VIS HEX M6X16		2		0	P1	
035	SE00000357	PROTECTION BATTERIE BLEUE		1			P18	
036	SE00000359	PROTECTION AR		1			P12	
037	SE09176166	VIS HEX M6X16		2		0	P1	
038	SE00000362	CAPOT		1			P6	
039	SE00000364	LOCKER FIXER PIN 73.5MM		1			P1	
040	SE00000365	LOCK HINGER		1			P1	
041	SE00001064	BATTERY COVER ASS'Y		1				
D10		INC. 38-40,42						
042	SE00000369	LOCKER FIXER PIN 64.5MM		1			P1	

Please order the parts with part number.

Print Date 22/11/2021

## Model No.DMR108N JOB SITE RADIO

Position	Référence pièce	Description	Echange	QTE	New/Old	Option 1	Option 2	COMMENTAIRE
043	SE00000325	VIS PTB 3X8(NI)		2			P1	
044	SE00000371	BATTERY COVER PACKING		1			P9	
045	SE0307PC5Z	COUVERCLE PILES		1		0	P1	
046	SE00000466	BATTERY CONTACT(+) 2100RA00700		1				
047	SE00000467	BATTERY CONTACT (-) 2100PL00200		1				
048	SE021E9030	CONTACT BATTERIE ASS'Y +/-		1		0	P1	
049	SE00000176	VIS PTHE6X20		1		0	P1	
050	SE00000177	PORTE POIGNEE D		1		0	P3	
051	SE00000179	POIGNEE		1		1	P5	
052	SE00000180	PORTE POIGNEE G		1		0	P3	
053	SE00000176	VIS PTHE6X20		1		0	P1	
054	SE09176166	VIS HEX M6X16		1		0	P1	
055	SE00000184	RESSORT		2		0	P1	
056	SE09994007	BILLE ACIER		2		0	P1	
057	SE023PC020	EVA 25X18X5.5		1		0	P1	
058	SE00000445	VIS PTB 3x45		1			P1	
059	SE09994007	BILLE ACIER		2		0	P1	
060	SE00000184	RESSORT		2		0	P1	
061	SE09176166	VIS HEX M6X16		1		0	P1	
062	SE00000445	VIS PTB 3x45		1			P1	
063	SE00001066	REAR CABINET ASS'Y		1				
D10		INC. 46-48,57,68,88						
064	SE00000395	RUBBER ANT 88-108		1			P69	
065	SE00000398	ROD ANT PACKING		1			P1	
066	SE00000396	TERMINAL ANTENNE		1			P1	
067	SE00000325	VIS PTB 3X8(NI)		1			P1	
068	SE023PC020	EVA 25X18X5.5		1		0	P1	
069	SE00000403	DC RUBBER COVER		1			P67	
070	SE00000404	SCREW PTHE 3X14(CR)		1			P1	
071	SE021PC030	PROTEGE CACHE BATTERIE		1		0	P1	
072	SE00000406	SPEAKER PACKING		1			P2	
073	SE00001068	RIGHT SPEAKER ASS'Y		1				
074	SE00000408	SPEAKER PANEL ASS'Y		1			P9	
075	SE024J9040	JOINT		4		0	P1	
076	SE9076146A	VIS HEX M6X14		4		0	P1	
077	SE9076146A	VIS HEX M6X14		4		0	P1	
078	SE024J9040	JOINT		4		0	P1	
079	SE00000408	SPEAKER PANEL ASS'Y		1			P9	
080	SE00001069	LEFT SPEAKER ASS'Y		1				
081	SE00000406	SPEAKER PACKING		1			P2	
082	SE00001080	TERMINAL E ASS'Y		1				
083	SE00000325	VIS PTB 3X8(NI)		2			P1	
084	SE00000422	POIGNEE HAUT PARLEUR		1			P90	
085	SE00000430	BOUTON INTERRUPTEUR		1			P1	

Please order the parts with part number.

Print Date 22/11/2021

## Model No.DMR108N JOB SITE RADIO

Position	Référence pièce	Description	Echange	QTE	New/Old	Option 1	Option 2	COMMENTAIRE
086	SE00001070	PCB D ASS'Y		1				
087	SE00000325	VIS PTB 3X8(NI)		2			P1	
088	SE00000587	LEAD WIRE W/CONNECTOR 170MM		1				
089	SE00000199	RONDELLE SILICONE		1		0	P1	
090	SE00000325	VIS PTB 3X8(NI)		1			P1	
091	SE00000199	RONDELLE SILICONE		1		0	P1	
092	SE00000325	VIS PTB 3X8(NI)		1			P1	
093	SE00000422	POIGNEE HAUT PARLEUR		1			P90	
094	SE00001071	PCB F ASS'Y (DC JACK)		1				
095	SE09090011	VIS 1.7		2		0	P1	
096	SE00000435	DC JACK HOLDER		1			P1	
097	SE00001072	CXT TERMINAL ASS'Y		1				
098	SE00000325	VIS PTB 3X8(NI)		2			P1	
099	SE00000195	TIGE 100 MM		2		0	P1	
100	SE024PC040	JOINT CAOUTCHOUC		1		65	P2	
A01	SE00000101	TRANSFORMATEUR 220V/12V BMR103		1		12	A23	

Please order the parts with part number.

Print Date 22/11/2021