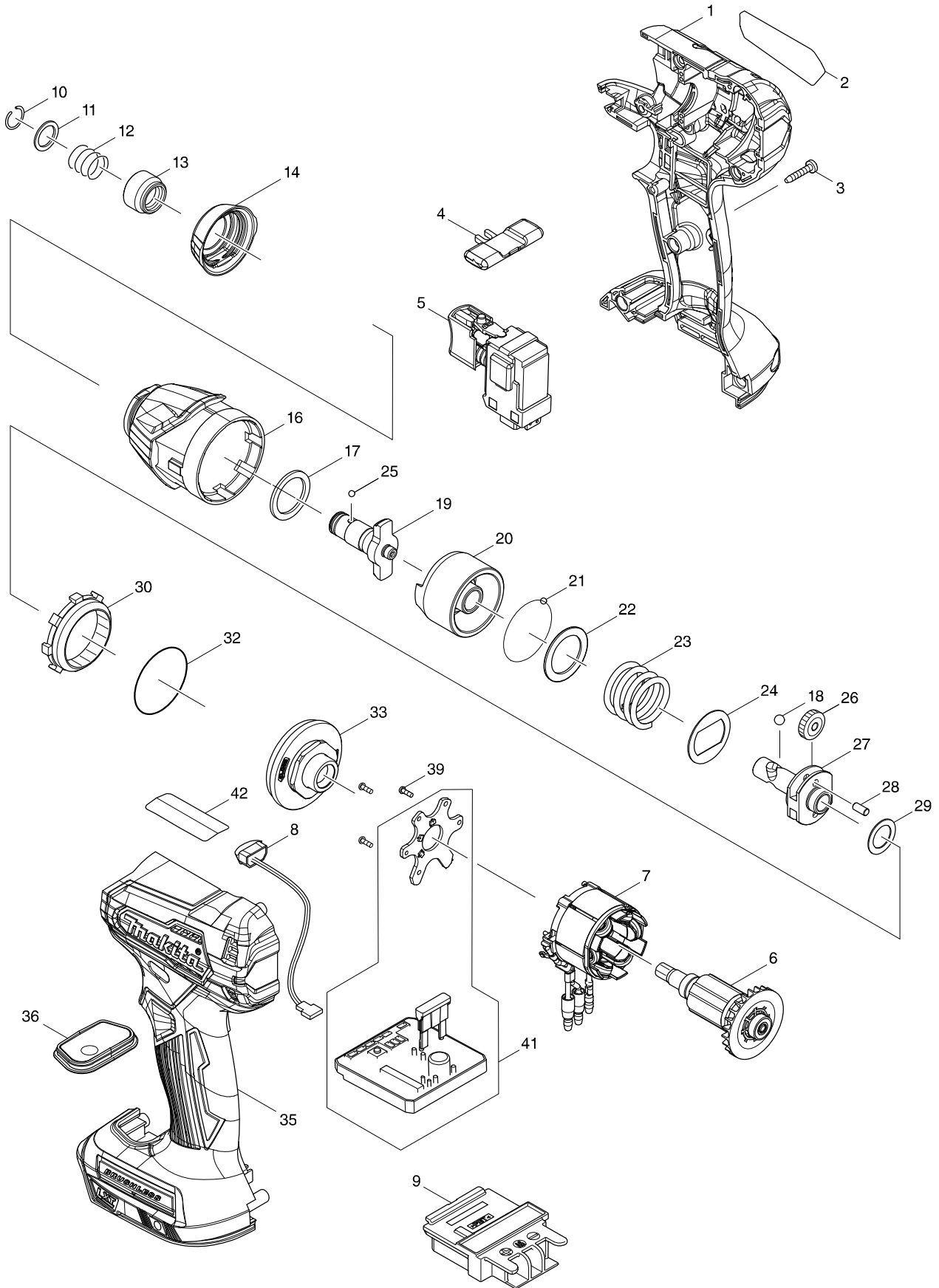


Numéro du modèle DTD155 CORDLESS IMPACT DRIVER



Position	Référence pièce	Description	Echelle	QTE	N/O	Option 1	Option 2	COMMENTAIRE
001	183G71-5	HOUSING SET		1				
C10	252126-6	***ECROU NYLSTOP HEX M4-7		2	65		P2	
D10		INC. 35						
002	853G07-5	DTD155 NAME PLATE		1				
003	266429-2	VIS 3x16		9	0		P1	
004	455053-8	F/R CHANGE LEVER		1			P1	
005	143975-1	SWITCH COMPLETE		1			P18	
006	619415-6	ROTOR		1				
007	629233-4	STATOR		1				
008	620521-2	LED CIRCUIT		1			P9	
009	643860-3	TERMINAL		1	1		P5	
010	231965-7	CIRCLIP 10		1	0		P1	
011	267143-3	RONDELLE PLATE 11		1	65		P2	
012	233005-7	RESSORT 13		1	65		P2	
013	326803-7	BIT SLEEVE		1				
014	424914-3	BUMPER		1				
016	144132-4	HAMMER CASE COMPLETE		1				
017	261159-0	NYLON WASHER 19		1				
018	216002-8	BILLE ACIER 4.8		2	1		P4	
019	326630-2	ANVIL M		1			P11	
020	324894-2	PERCUTEUR		1	9		P12	
021	216019-1	BILLE ACIER 3		24	0		P1	
022	267380-9	RONDELLE PLATE		1	0		P1	
023	232326-4	COMPRESSION SPRING 21		1				
024	267813-4	RONDELLE 21		1	0		P1	
025	216019-1	BILLE ACIER 3		2	0		P1	
026	221437-0	SPUR GEAR 17		2			P7	
027	324897-6	AXE		1	2		P9	
028	268217-3	AXE 3.5		2	0		P1	
029	253052-2	RONDELLE SP 12		1	65		P2	
030	227316-0	INTERNAL GEAR 43		1				
032	213479-8	O'RING 33		1	65		P2	
033	141893-7	BEARING BOX COMPLETE		1				
035	183G71-5	HOUSING SET		1				
C10	252126-6	***ECROU NYLSTOP HEX M4-7		2	65		P2	
D10		INC. 1						
036	144137-4	SWITCH PLATE COMPLETE		1				
039	266490-9	TAPPING SCREW PT 2X6		3			P1	
041	620586-4	CONTROLLER		1				
A01	266622-8	VIS M4X12		1	0		A1	
A02	346317-0	CROCHET		1	0		A3	
A03	***DC18RC	DC18RC FAST CHARGER		1			A42	
A04	197600-6	BATTERY BL1830B SET		2				
A05	450128-8	BATTERY COVER		1	0		P1	
A06	821550-0	COFFRET MAKPAC2		1	8		A28	
C10	453974-8	LOQUET		4	0		P1	
A07	812T46-2	DTD155RFJ INDICATION LABEL		1				
A08	812T47-0	DTD155RFJ PLASTIC CASE LABEL		2				

