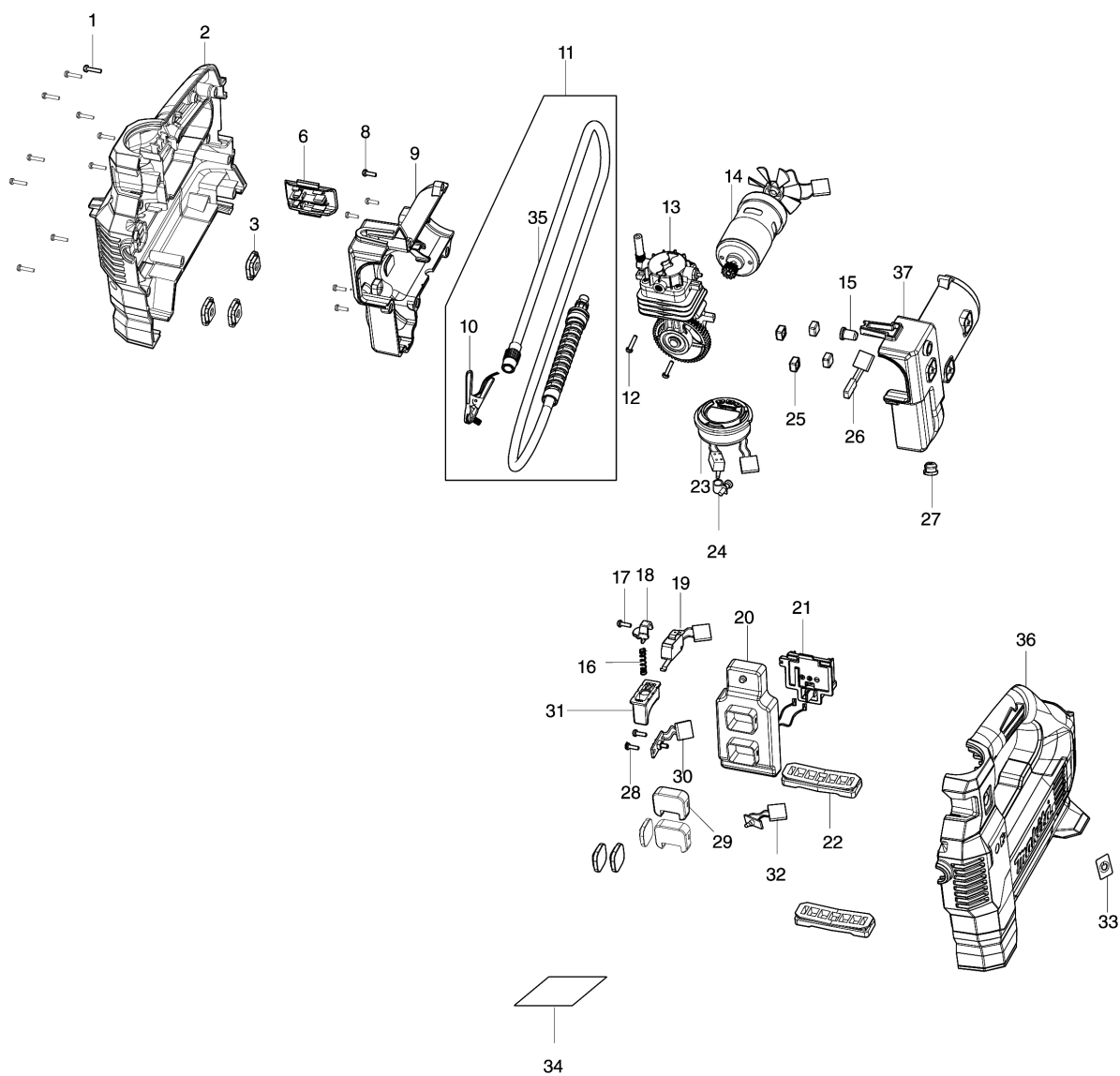


Model No.DMP181 CORDLESS INFLATOR



## Model No.DMP181 CORDLESS INFLATOR

Position	Référence pièce	Description	Echange	QTE	New/Old	Option 1	Option 2	COMMENTAIRE
001	TE00000028	TAPPING SCREW 3X14		10				
002	TE00000614	HOUSING SET		1				
D10		INC. 33,36						
003	TE00000595	INNER PAD		6				
006	TE00000593	FIXED BRACKET		1				
008	TE00000029	TAPPING SCREW 3X10		5				
009	TE00000596	INNER HOUSING SET		1				
D10		INC. 37						
010	TE00000597	BRITISH ADAPTER		1				
011	TE00000598	HOSE ASSEMBLY		1				
D10		INC. 10						
012	TE00000624	SCREW 4X6		2				
013	TE00000625	CYLINDER COMPLETE		1				
014	TE00000615	MOTOR ASSEMBLY		1				
015	TE00000600	RELEASE VALVE BUTTON		1				
016	TE00000330	SPRING		1				
017	TE00000029	TAPPING SCREW 3X10		1				
018	TE00000328	TRIGGER SPRING-FIXED BLOCK		1				
019	TE00000601	BUTTON		1				
020	TE00000616	CONTROLLER		1				
021	TE00000424	BATTERY TERMINAL		1				
022	TE00000609	MAT		2				
023	TE00000617	DIGITAL DISPLAY		1				
024	TE00000352	CLAMP		1				
025	TE00000606	PAD		4				
026	TE00000607	THERMAL PROTECTOR		1				
027	TE00000604	PLUG		1				
028	TE00000029	TAPPING SCREW 3X10		2				
029	TE00000602	PLATE		2				
030	TE00000608	POWER SWTICH		1				
031	TE00000485	SWITCH		1				
032	TE00000610	LED CIRCUIT		1				
033	TE00000426	SWITCH LABEL		1				
034	TE00000618	NAME PLATE		1				
036	TE00000614	HOUSING SET		1				
D10		INC. 2,33						
037	TE00000596	INNER HOUSING SET		1				
D10		INC. 9						
A01	TE00000592	BALL ADAPTER		1				
A02	TE00000333	SWIM RING ADAPTER		1				
A03	TE00000594	FRENCH ADAPTER		1				

Please order the parts with part number.

Print Date 1/9/2021